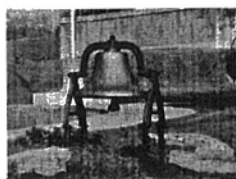


Urban Hike



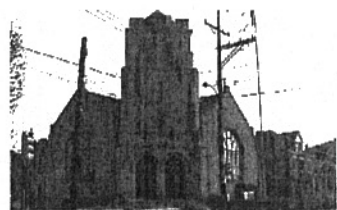
1. This bell came from the bell tower of the McKelvey School at the corner of Braddock and Westmoreland Avenues. The bell had

been stored in the basement of Denniston School for many years. It was moved to Dickson in approximately 1978 where it was stored. In 1996, the bell found a home at the corner of Monroe and Schoyer Avenue.

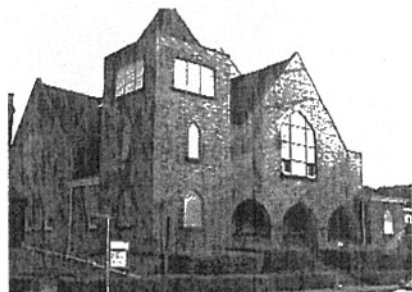


Dickson Intermediate School. In the fall of 1930, Dickson was opened as an elementary school. In 1945, it was changed to a junior high. In 1977, Dickson became an elementary school again housing students from grades K-6. In 1981, up to the present day, Dickson has become a school of grades 4-6. Today's enrollment is approximately 500 students.

This home at 7328 Monroe Street was designed by Fredrick Scheibler. Built between 1917-1921 and modeled after a cottage in France, it was originally owned by Dr. Pyle.



The Swissvale Presbyterian Church is located at the corner of Church Street and Monongahela Avenue. All of the Swissvale pioneer families were of Scotch-Irish ancestry including the Swisshelms, the Milligans, the Dennistons, the Dicksons, the McCagues, the Collingwoods and the Newmyers, all of whom were founding families of the church. James Swisshelm donated the land for the church. The building is in the English Gothic style and is built from sandstone from Beaver County. It was started in 1871.



Saint John Lutheran Church was dedicated on April 5, 1908 and cost \$19,000. Additional improvements were made to the church by excavating the basement and arranging it with separate classrooms for Sunday school purposes.

Trinity Lutheran Church. In 1930, under the leadership of the Rev. H. Woidke, the congregation moved to the corner of McClure and Monongahela Avenues. The church was built in the French Provincial style of the Normandy type.



Carnegie Free Library of Swissvale was erected in 1916 and 1917 under the direction of local



architect, Andrew Isles. Its style is Tudor gothic. It was a gift of the Carnegie Corporation. From 1973 until

1977, the library served as both a public library and the Swissvale High School library.



St. Anselm's Church was dedicated on July 19, 1925. The architect was A. F. Link, D. Sc. The church has rough brick and limestone trimmings patterned after the Romanesque style of Northern Italy. Between the 1930's and 1950's, stained glass windows were installed throughout the church.

This house at 7348 McClure Street belonged to the Lydon family. It's a three-story duplex that's at least 100 years old. Duplexes were usually built for relatives. This has a basic farmhouse shape, typical of the early houses in Swissvale. The house was probably built around 1880-1899 with an "Italianate" feel. It appears much as it did when it was built.



10. A Pittsburgh "4 square," this house at 7473 McClure Street has some Romanesque Revival details. The third floor window has a

Victorian style with detailed shingles. It has some stained glass windows. Note that there is a wrap-around porch. It was probably built around 1900-1905.



7449 Church Street is a Second Empire/Classical style home typically built between 1880-1890. This is typical of the type of home built before the great building boom of the turn of the century. Notice the rare example of a "hooded" dormer, beautiful woodwork and Mansard roof.

Denniston School, formerly named the Longfellow School, was ready for use in 1902. It was closed in 1977 and has been converted into an apartment building.



View of Whipple Street homes from the corner of Nevada Street



Swissvale & Swisshelm Park

Swissvale and Swisshelm Park

