

Cover Image

27th Ward Women's Community Association, June 1,1936  
Pittsburgh City Photographer

A view of the Twenty-Seventh Ward Women’s Community Association helping with the 1936 Clean Up Campaign. The 27th ward encompassed what are now the Marshall-Shadeland and Brighton Heights neighborhoods of Pittsburgh.

Western Pennsylvania Penitentiary

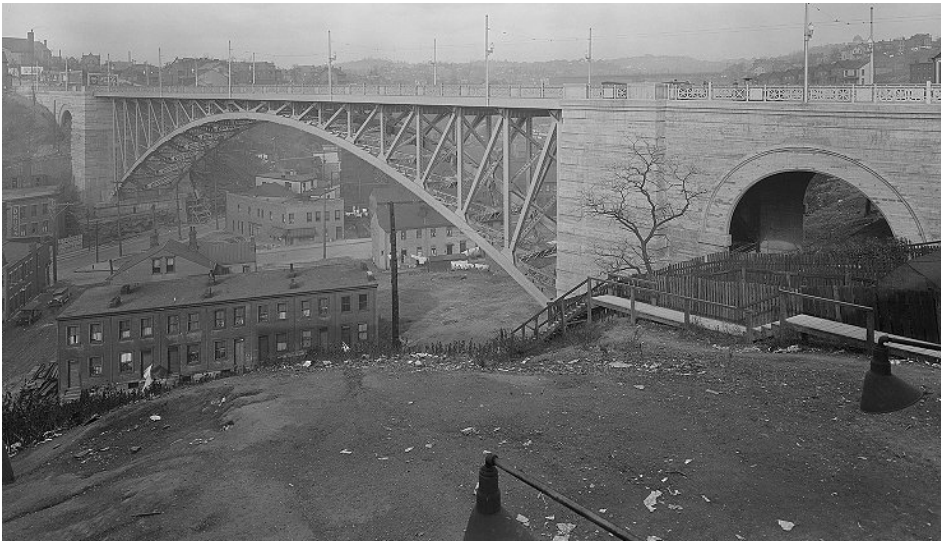
Datec. 1890-1891  
View of Western Pennsylvania Penitentiary from across the Ohio River. Now called the State Correctional Institution, the penitentiary (or prison) was originally built in 1876-82. It still stands today at Doerr Street on the Ohio River at Woods Run. The turrets with their dormers and arched windows have been removed and the building looks considerably more sober today. E.M. Butz, architect.



Carnegie Museum of Art Collection of Photographs, 1894-1958, Carnegie Museum of Art

New Bridge

November 7, 1927  
The California Avenue Bridge was originally designed to carry streetcars. It was replaced by the City of Pittsburgh in 1928 with a 642-foot span also known as the Robert McAfee Bridge. This is a view of the east side from the south end of the span.



Pittsburgh City Photographer Collection, 1901-2002

Woods Run School

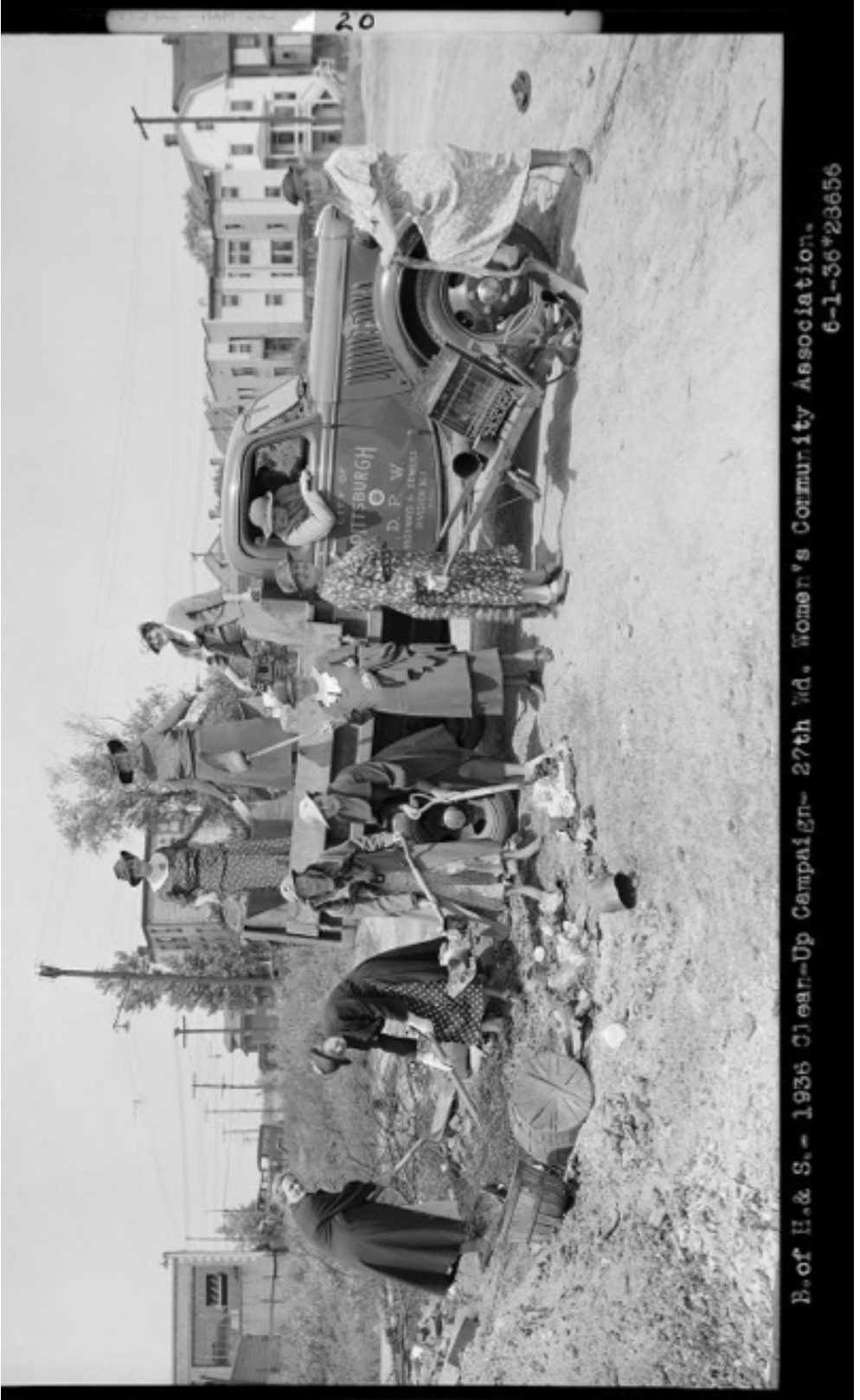
In 1873 a new and more spacious building was built, located at Westhall Street near Preble Avenue in the Ninth Ward, with twelve rooms and large hall at a cost of \$40,000 to house the increasing student body. Woods Run School was closed in February 1965 and sold to the Urban Redevelopment Authority in May 1974.



Woods Run School, Pittsburgh Public Schools Photographs, 1880-1982, MSP 117, Library and Archives Division, Senator John Heinz History Center



MARSHALL



SHADELAND



# Marshall-Shadeland

