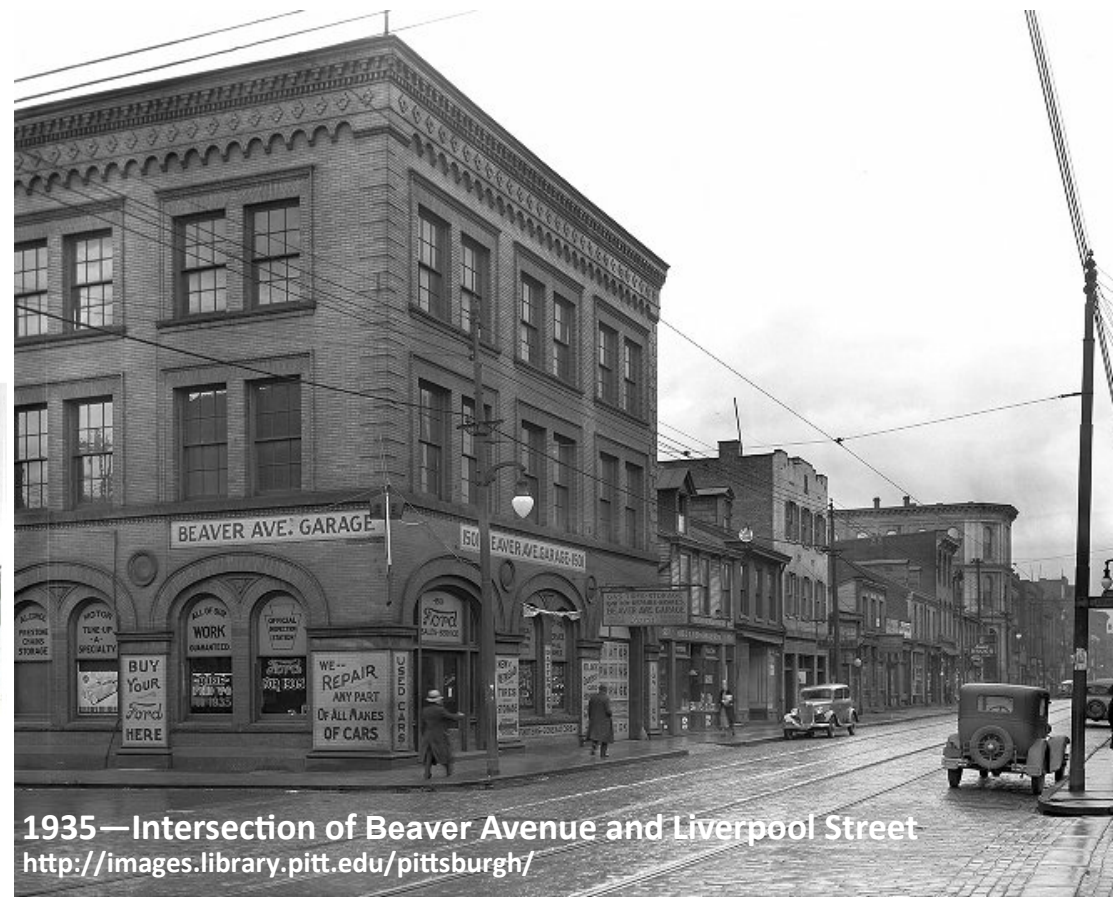


Pittsburgh
Then and Now
by Arthur G.
Smith (1990)



Manchester & Chateau

May 2016

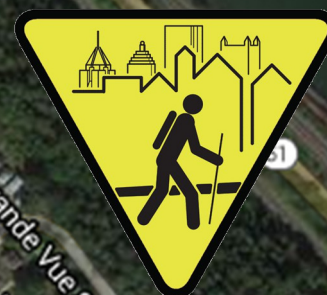
Urban Hike

In partnership with Jane's Walk

- A Starting and Ending
- B 1226 Sheffield
- C 1300 block of Liverpool
- D The Langenheim House
- E Anderson Manor, 1423 Liverpool Street
- F Columbus Square - New Housing Development
- G Route 65 Pedestrian Underpass
- H Drew Mathieson Center
- I Bicycle Heaven
- J West End Bridge
- K Allegheny T Station
- L Emmanuel Episcopal Church - H.H. Richardson
- M Western Ave



The Langenheim House of 1833 at 1315 Liverpool Street, shown in 1967. It was rescued, restored, and remodeled for apartments by PHLF and the Manchester Citizens Corporation. Source: Phlf.org



jane's
walk

Urbanhike.com

janeswalk.org