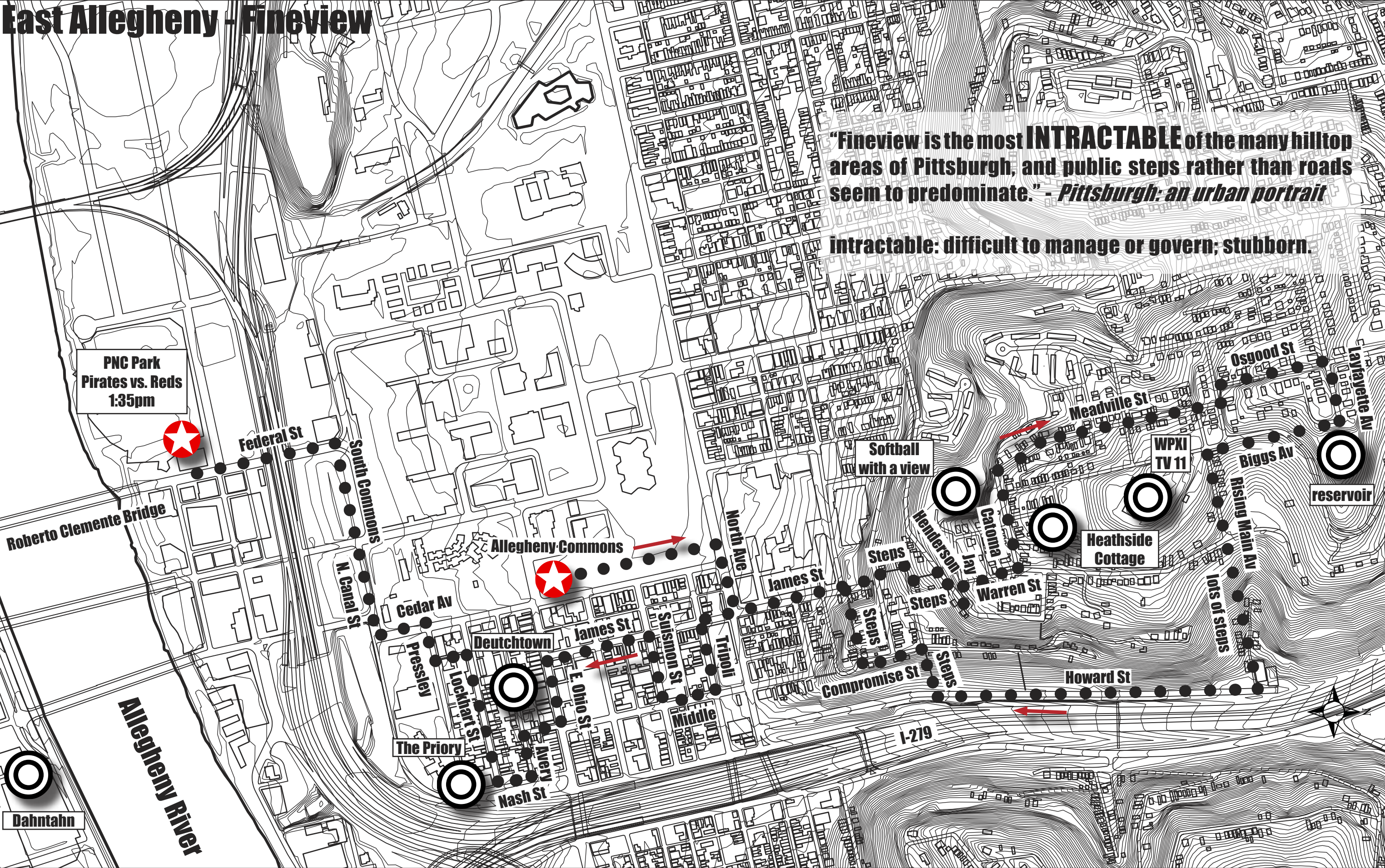


East Allegheny - Fineview

"Fineview is the most **INTRACTABLE** of the many hilltop areas of Pittsburgh, and public steps rather than roads seem to predominate." - *Pittsburgh: an urban portrait*

intractable: difficult to manage or govern; stubborn.



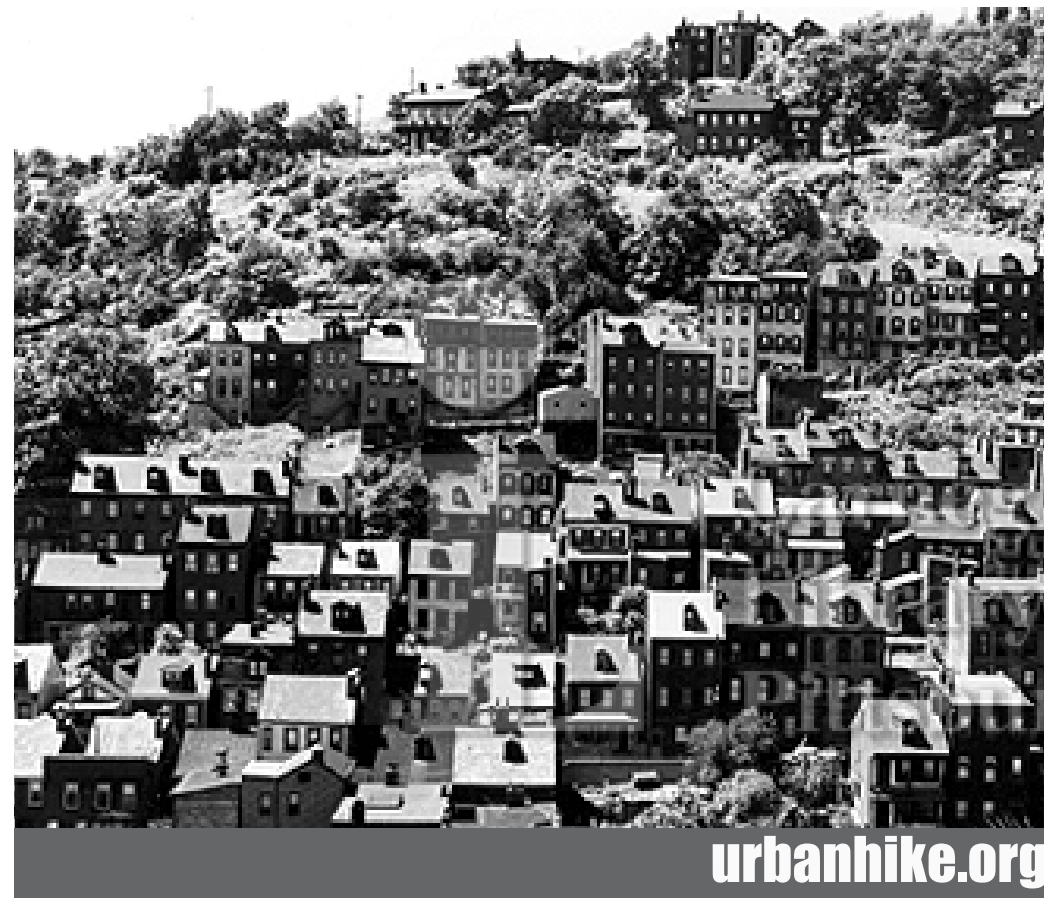
A Home With a Past Becomes a Present

In 1992, Judith Harvey **fell in love** with a dilapidated historic landmark that would eventually become her home.

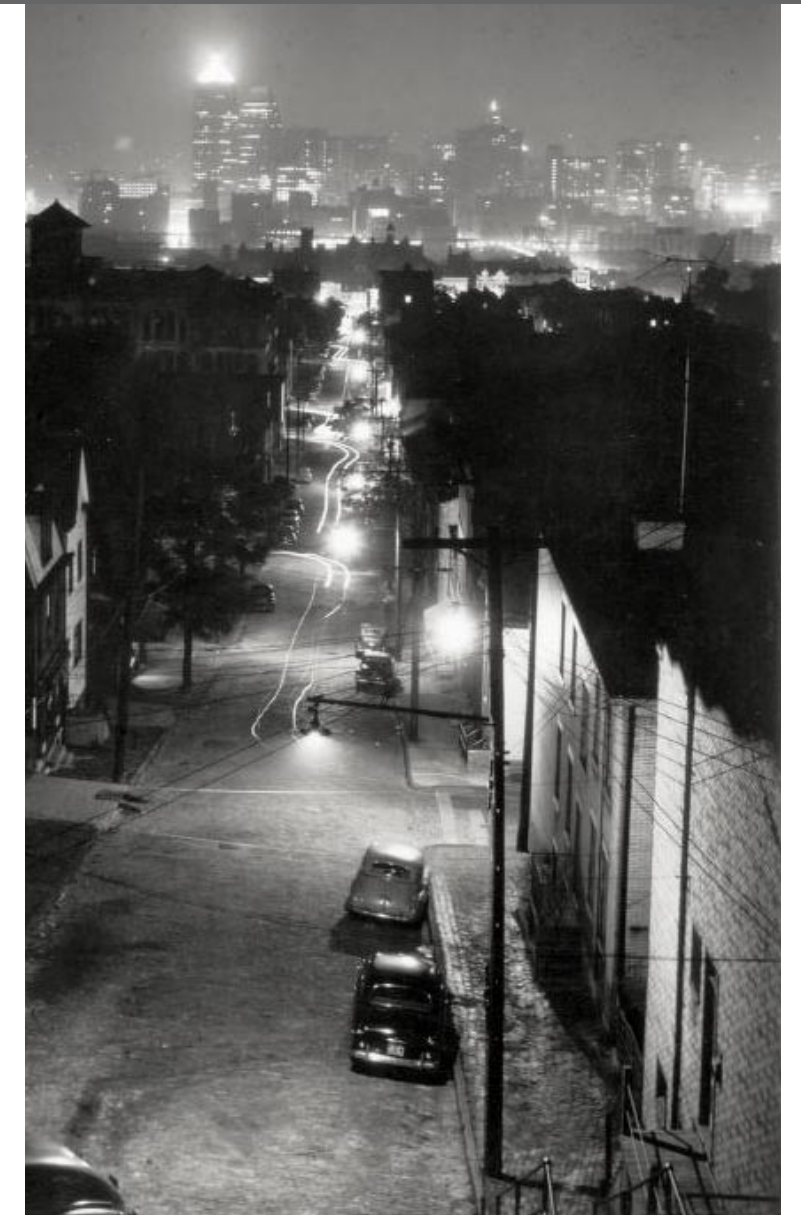
After years of restoration, she turned **Heathside Cottage** into a showplace with the intention of preserving the **1855 Gothic Revival** cottage for the enjoyment of future generations.

To accomplish that goal, in 2000, she placed a façade easement on her National Register listed home then gave it to the Pittsburgh History & Landmarks Foundation while retaining the right to live there for the rest of her life.

The word “**heath**”- meaning an open area with wild shubbery - is English. It suggests the romantic seclusion this house originally had, looking southward over the then growing City of Allegheny from a vantage point of 400 feet up.



urban hike



Fineview - East Allegheny
28 August 2005