

Map showing homes at the bottom of Canton Avenue, the steepest street in the US, at a 37% grade
G. M. Hopkins & Co. Real estate plat-book of the city of Pittsburgh, Volume 9, 1934



View of Hampshire Street at Rockland Street looking toward Suburban Avenue, August 22, 1912
Pittsburgh City Photographer Collection, 1901-2002, AIS.1971.05, Archives Service Center, University of Pittsburgh



Road improvements on Hampshire Avenue from Suburban Avenue, October 28, 1912
Pittsburgh City Photographer Collection, 1901-2002, AIS.1971.05, Archives Service Center, University of Pittsburgh

Beechview according to Beechview.org

Named for the many beech trees found on its hillsides, Beechview was originally settled by Scotch-Irish and English pioneers in the late 1700’s. Welsh and Irish settlers soon followed working in the many local coal mines. The mid 1800’s saw the arrival of German truck farmers. A small German community known as Seldom Seen developed adjacent to Beechview. Italian and Jewish families began arriving in Beechview before World War I. Today the population reflects a rich racial and ethnic diversity.

Incorporated as a borough in 1905, Beechview was annexed to the City of Pittsburgh in 1909. The arrival of a trolley line in 1904 led to the community’s growth and development. This growth was further spurred by the opening of the Liberty Tunnels in 1924. The community is bounded by Saw Mill Run Boulevard, West Liberty Avenue, Wenzell Avenue, and Banksville Road.

Demographics for Zip Code 15216

Population	
Total Population	25207
Percent Change Since 1990	-9.0 %
Percent Change Since 2000	-5.0 %
Density (Persons per sq. mile)	7157.00
Median Age	38.72

Households	
Total Households	11313
Family Households	6167
Non-Family Households	5147
Households With Children	3117
Households Without Children	8198
Average People Per Household	2.20

Education	
No High School	231
Some High School	883
Some College	3075
Associate Degree	1682
Bachelors Degree	4355
Graduate Degree	2371

Average Household Income \$56,203

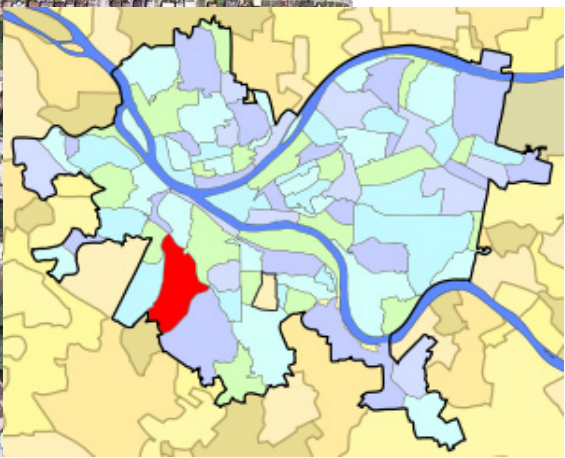
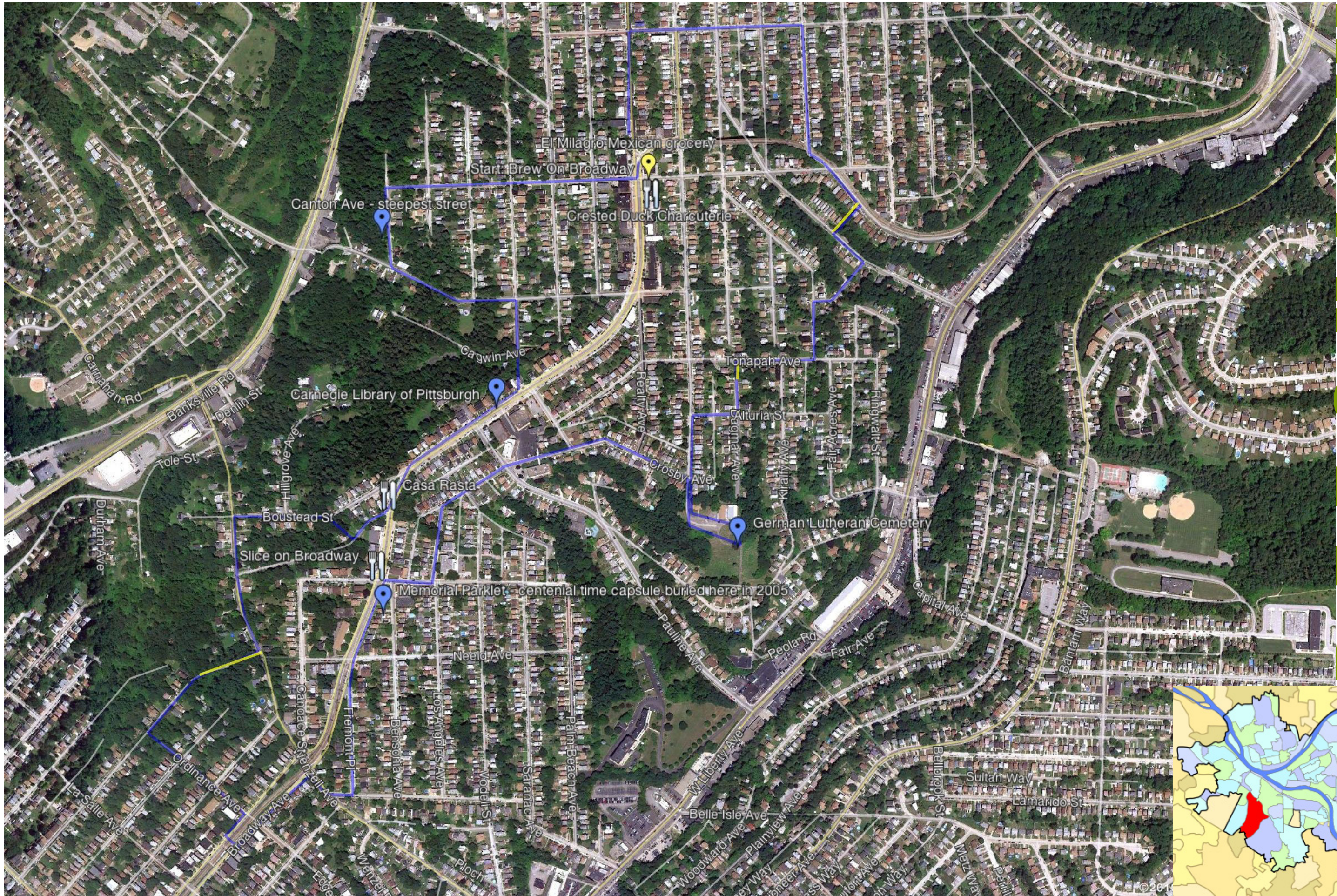


urbanhike.com

BEECHVIEW



URBANHIKE



W
E
C
H
E
B